



# enmach

PART  
NUMBER:

DPRV120S

## SPECIFICATION SHEET

### DPRV120S DIESEL TANK

- Slimline Tank
- Roto Moulded Diesel Grade Yellow Polyethylene
- 3/8" Plastic Thread Breather & 3/4" Brass Fittings
- 1 1/2" Inlet
- Mount Kit (Optional)
- Approximate Usable Storage- 120 Litres
- Size: L x 1080mm, W x 835mm, H x 170mm
- Filling Instructions:

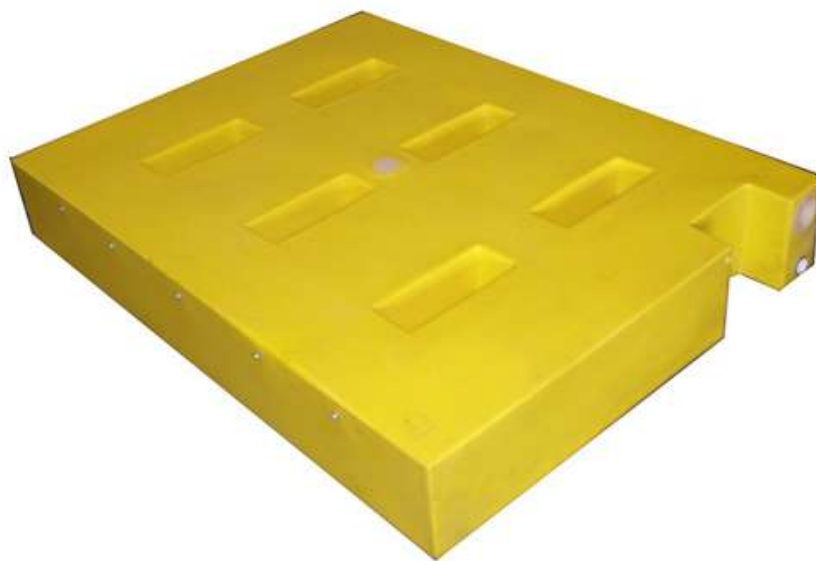
*Experience the  
Poly Difference!*

This tank is not to be pressure filled from a hose that is connected from mains pressure to the tank that has a larger flow rate than the breather. Doing so will cause the tank to inflate and split and will void warranty.

We recommend to use plastic/nylon fittings in this tank not brass.

The stated litre capacity is by cubic measurements and is a guide only. Usable litre capacity is determined by the way the tank is mounted.

**TANK MUST BE FLUSHED BEFORE INITIAL USE**



# enmach

Call us today on Freecall  
**1800 502 267**

17 CHARLIE TRIGGS CRESCENT  
BUNDABERG QLD 4670  
FAX: 07 4153 0900  
EMAIL: [sales@enmach.com.au](mailto:sales@enmach.com.au)  
[www.enmach.com.au](http://www.enmach.com.au)